



*Orthopaedic Cannulated Power Drill*  
*Orthopaedic Cannulated Micro Power Drill*  
*Orthopaedic Power Saw*  
*Orthopaedic Micro Power Saw*  
*Orthopaedic Plaster Saw*



***Orthopaedic Power Saw AOPS1511***  
***Orthopaedic Micro Power Saw AOMPS300***

***Used in Arthroplasties, Osteotomies of joints & bones***



***Orthopaedic Cannulated Power Drill AOPD2511***  
***Orthopaedic Cannulated Micro Power Drill AOMPD2011***

***Holds & drives K-wires, also used in arthroplasty, trauma surgery, intramedullary interlocking nail surgery and arthroscopic surgery***

## >> *Features*

**01** *Variable speed, convenient for use*

---

**02** *Imported motor*

---

**03** *High coaxiality, low noise*

---

**04** *Can be autoclavable up to 135°C*

---

## >> Compositions

### *Orthopaedic Power Saw*

- *One handpiece*
- *Two battery aseptic transfer rings*
- *One charger*
- *Two batteries*
- *One Aluminum case*



### *Orthopaedic Cannulated Power Drill*

- *One handpiece*
- *One charger*
- *Two batteries*
- *Two battery aseptic transfer rings*
- *One drill chuck key*
- *One Aluminum case*



### *Orthopaedic Micro Power Saw*

- One handpiece*
- One charger*
- Two lithium batteries*
- Two battery aseptic transfer rings*
- Five mini saw blades*
- One instruction manual*
- One aluminum case*



### *Orthopaedic Cannulated Micro Power Drill*

- *One handpiece*
- *One charger*
- *Two lithium batteries*
- *Two battery aseptic transfer rings*
- *One drill chuck key*
- *One instruction manual*
- *One aluminum case*



## >> Main Technical Data

	<i>Orthopaedic Cannulated Power Drill</i>	<i>Orthopaedic Cannulated Micro Power Drill</i>	<i>Orthopaedic Power Saw</i>	<i>Orthopaedic Micro Power Saw</i>
Output Power	150W	100W	150W	100W
Unit rise in temperature	≤25°C	≤25°C	≤25°C	≤25°C
Input Voltage	AC 110-220v, 50-60Hz	AC 100-220v, 50-60Hz	AC 110-220v, 50-60Hz	AC 100-220v, 50-60Hz
Voltage	14.4V	7.4V	14.4V	7.4V
Battery capacity	1800mAh	3000mAh	1800mAh	3000mAh
Battery feature	Environmental friendly nickel-metal hydride battery	Lithium battery	Environmental friendly nickel-metal hydride battery	Lithium battery
Charging time	2 hours	2,5 hours	2 hours	2,5 hours
Non-loading speed	0-680/0-1000rpm	0-1200rpm	0-18000cpm	0-18000rpm
Non-loading noise	≤65dB ( A )	≤65dB ( A )	≤65dB ( A )	≤65dB ( A )
Axial run out	≤0.15mm	≤0.15mm		
Rated torque	5.5N.m/4N.m	2N.m		
Impulsive torque	10.5N.m/8.5N.m	3,5N.m		
Drill chuck clamping range	0.8-7.9mm	-		
Canulated diameter	≤4.2mm	≤2,5mm		

## >> Cannulated Power Drill *Product Details*



### >> *Accessories*

**Drill Chuck Key**



**Charger**



**Battery of 14. 4v**



**Aseptic Battery Transfer Ring**




---

## >> Power Saw *Product Details*



### >> *Accessories*

**Charger**



**Battery of 14. 4v**



**Aseptic Battery Transfer Ring**





**>> Aluminium case packing**



**>> Sterilization case choice with additional cost**

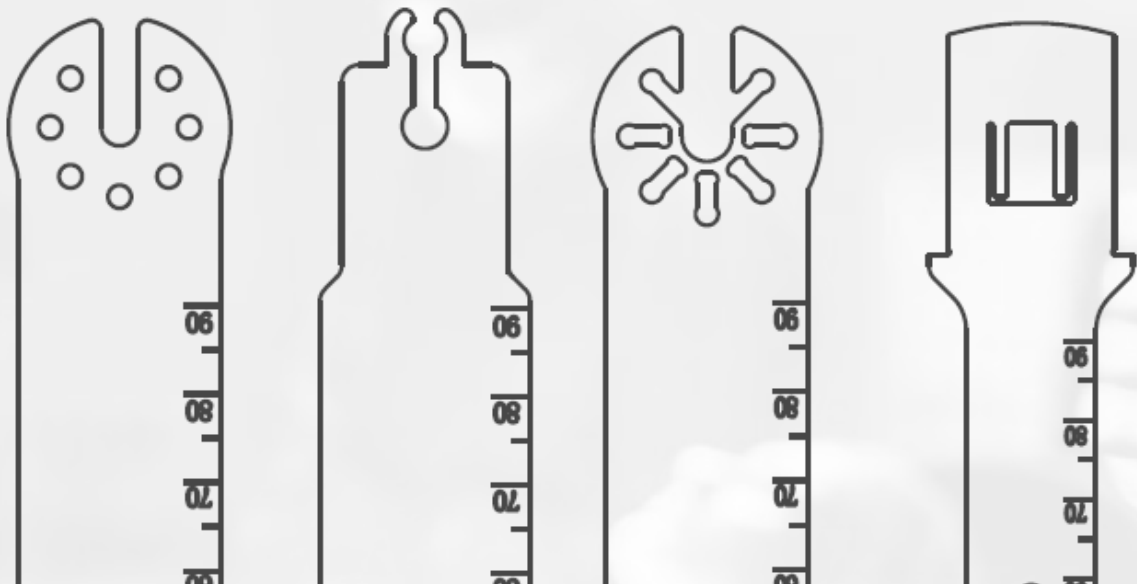
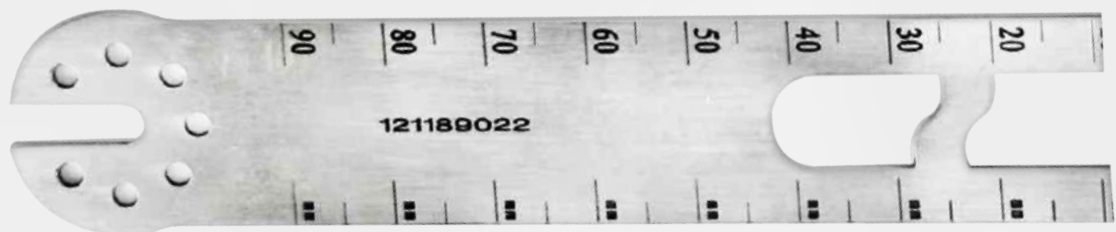
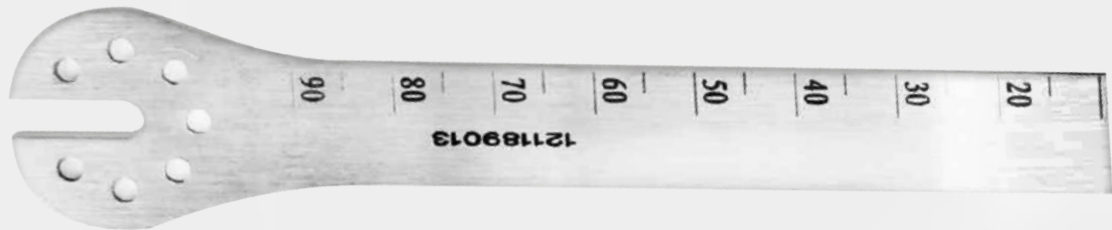






## ***Basic steps of sterilization, cleaning and maintenance of power tools ;***

- 1. Disaccessibly: All the consumable parts (saw blades, drill bits, etc) and battery should be removed before cleaning,***
- 2. Cleaning: Please wash and rinse with slow flowing water. Note: use soft brush to clean, then wipe with soft dry cloth. All instruments are prohibited from soak cleaning,***
- 3. Maintenance: Maintain by medical lubricant every time when cleaning and wiping instruments. Apply lubricant on every mobilizable part,***
- 4. Assembly and fuctional test: After cleaning and applying lubricants,install all parts one by one and conduct function test and then check its intactness,***
- 5. Sterilization: Fore-vacuum high temperature for 132 centigrade and high pressure within 20 minutes; natural cooling time is more than 40 minutes. Exproxyethane and formaldehyde are prohibited. Instruments must be kept dry before sterilization.***



## **SAW BLADES**

*For application in Aysam power saws*

## >> Aysam Saw Blades

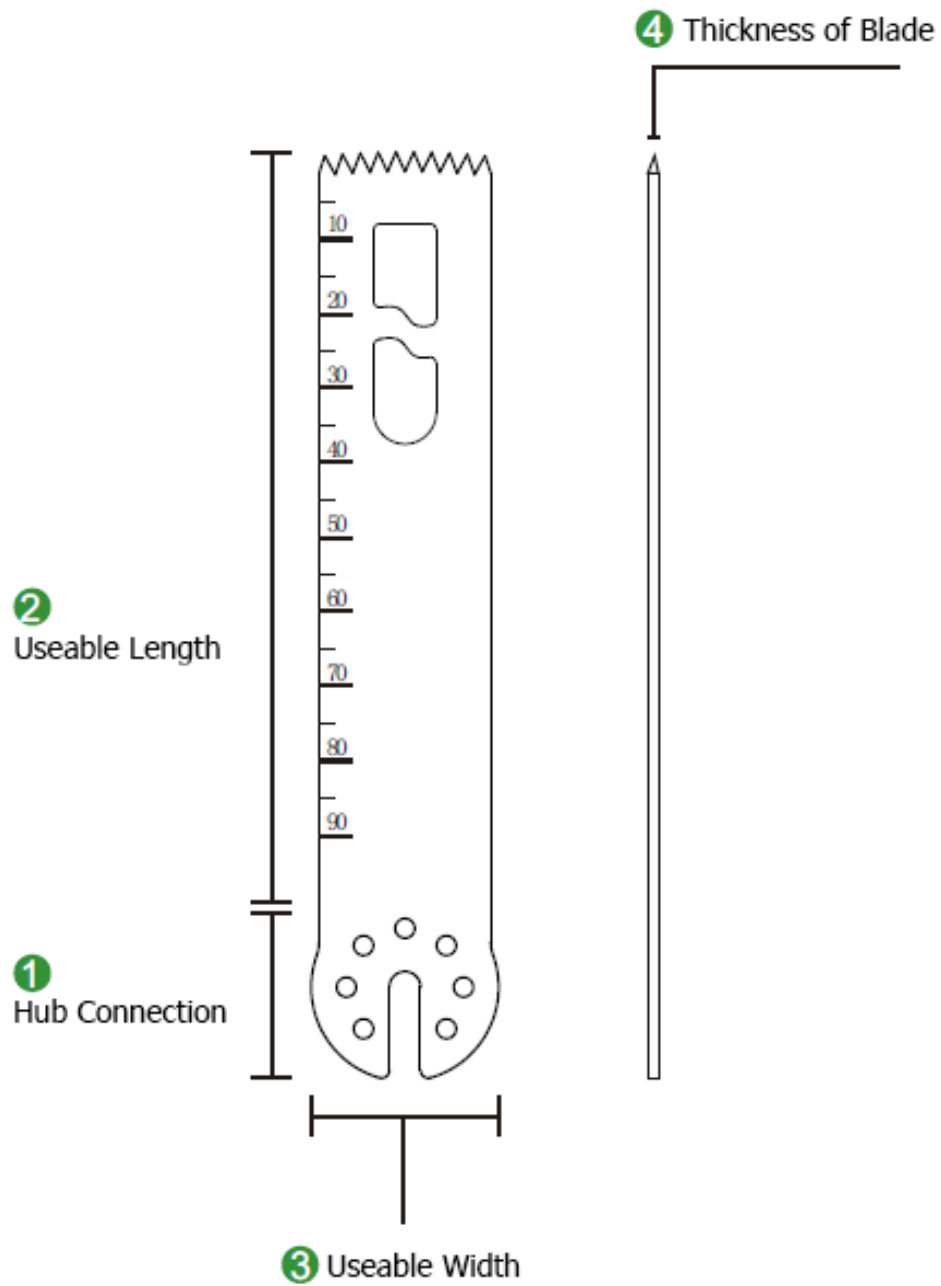
Aysam provides all kinds of replaceable accessories, suitable for Aysam power instrument systems. Aysam is a professional enterprise that manufactures orthopaedic saw blades with high quality stainless steel materials.

Aysam products are well received by customers from more than 85 countries.

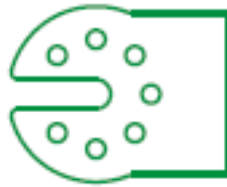


Saw blades with non sterile package





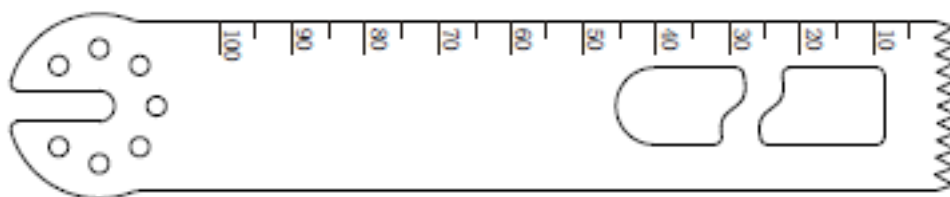
<u>AY</u>	<u>90</u>	<u>22</u>	<u>08</u>
<b>1</b>	<b>2</b>	<b>3</b>	<b>4</b>



## ***Aysam Large Oscillating Saw Blade***



## ***Aysam Micro Oscillating Saw Blade***

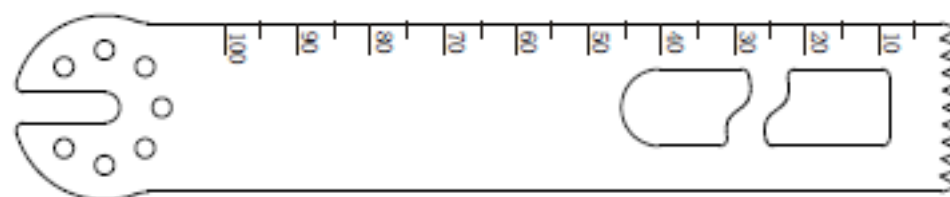


Product Code  
AY1002212

Length  
100 mm

Width  
22 mm

Thickness  
1.2 mm

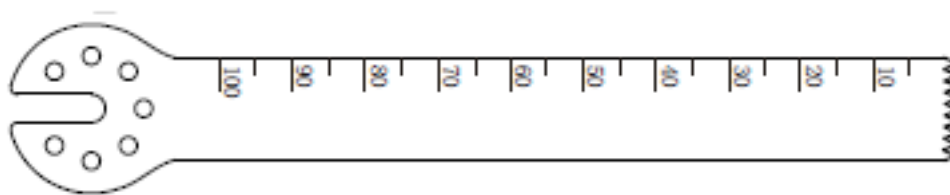


Product Code  
AY1002210

Length  
100 mm

Width  
22 mm

Thickness  
1.0 mm

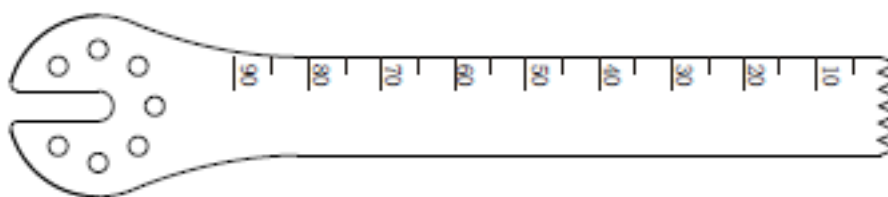


Product Code  
AY1001310

Length  
100 mm

Width  
13 mm

Thickness  
1.0 mm

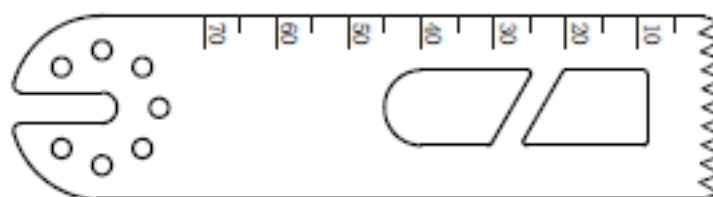


Product Code  
AY901310

Length  
90 mm

Width  
13 mm

Thickness  
1.0 mm



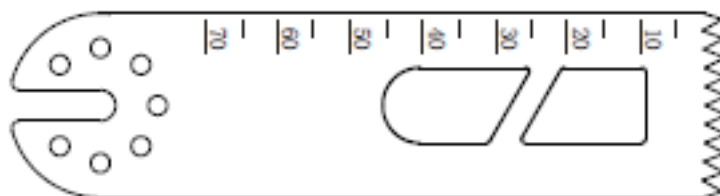
Product Code  
AY702410

Length  
70 mm

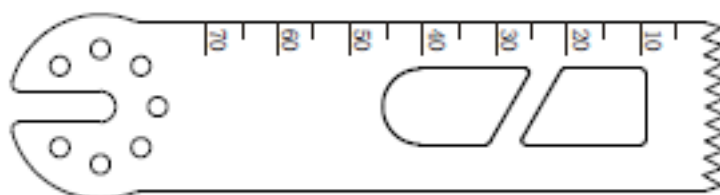
Width  
24 mm

Thickness  
1.0 mm

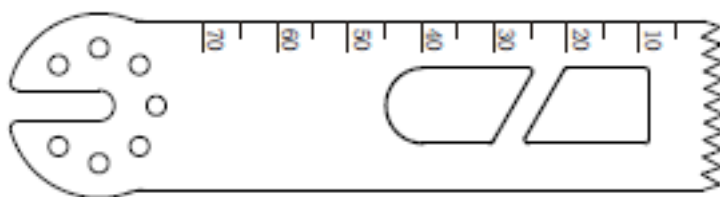




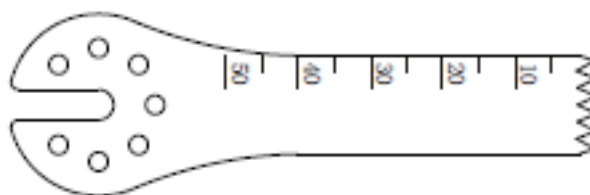
Product Code AY702412	Length 70 mm	Width 24 mm	Thickness 1.2 mm
--------------------------	-----------------	----------------	---------------------



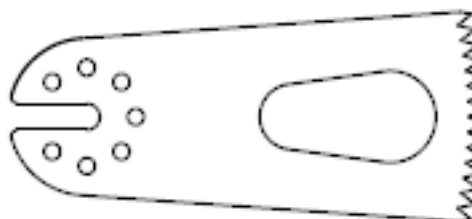
Product Code AY7022127	Length 70 mm	Width 22 mm	Thickness 1.27 mm
---------------------------	-----------------	----------------	----------------------



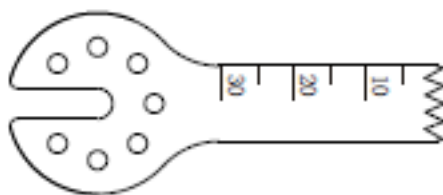
Product Code AY702208	Length 70 mm	Width 22 mm	Thickness 0.8 mm
--------------------------	-----------------	----------------	---------------------



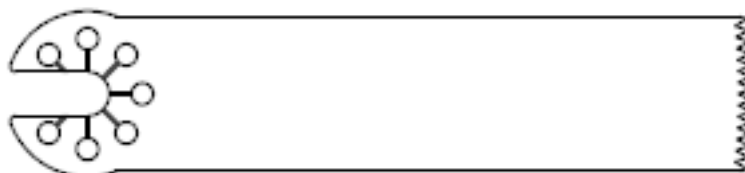
Product Code AY501308	Length 50 mm	Width 13 mm	Thickness 0.8 mm
--------------------------	-----------------	----------------	---------------------



Product Code AY453212	Length 45 mm	Width 32 mm	Thickness 1.2 mm
--------------------------	-----------------	----------------	---------------------



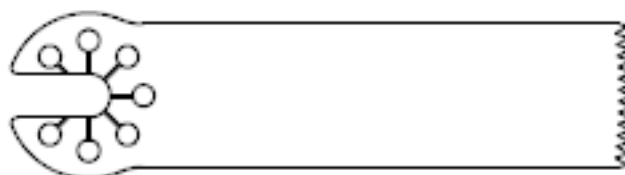
Product Code	Length	Width	Thickness
AY301005	30 mm	10 mm	0.5 mm



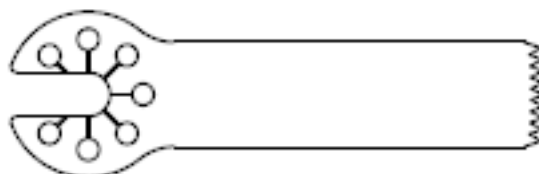
Product Code	Length	Width	Thickness
AY501405	50 mm	14 mm	0.5 mm



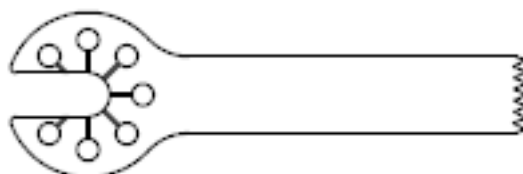
Product Code	Length	Width	Thickness
AY401505	40 mm	15 mm	0.5 mm



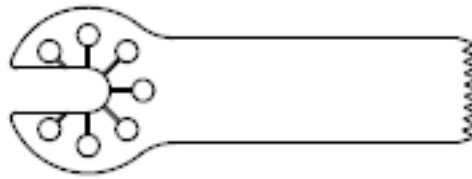
Product Code	Length	Width	Thickness
AY391305	39 mm	13 mm	0.5 mm



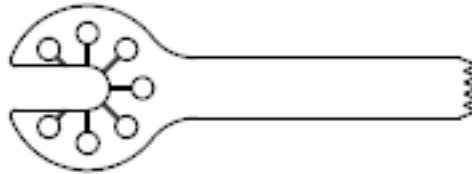
Product Code	Length	Width	Thickness
AY319505	31 mm	9.5 mm	0.5 mm



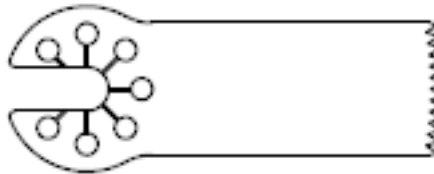
Product Code	Length	Width	Thickness
AY2950705	29.5 mm	7 mm	0.5 mm



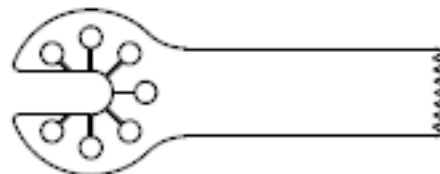
Product Code AY259505	Length 25 mm	Width 9.5 mm	Thickness 0.5 mm
--------------------------	-----------------	-----------------	---------------------



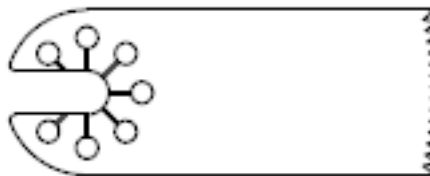
Product Code AY255505	Length 25 mm	Width 5.5 mm	Thickness 0.5 mm
--------------------------	-----------------	-----------------	---------------------



Product Code AY221205	Length 22 mm	Width 12 mm	Thickness 0.5 mm
--------------------------	-----------------	----------------	---------------------



Product Code AY220805	Length 22 mm	Width 8 mm	Thickness 0.5 mm
--------------------------	-----------------	---------------	---------------------



Product Code AY221505	Length 22 mm	Width 15 mm	Thickness 0.5 mm
--------------------------	-----------------	----------------	---------------------



## ***ORTHOPAEDIC PLASTER SAW AOPS4042***

*Used for cutting orthopaedic plaster & synthetic casts*

*The medical plaster saw AOPS4042 is designed to cut all kinds of orthopaedic plaster bandages.*

## Product Pictures >>

---



## Standard Configuration >>

**AOPS4042 Plaster Saw**

**Allen Key**

**Round 65mm dia. Blade**

**Round 42mm dia. Blade**

**Universal Plaster Cutting Blade**

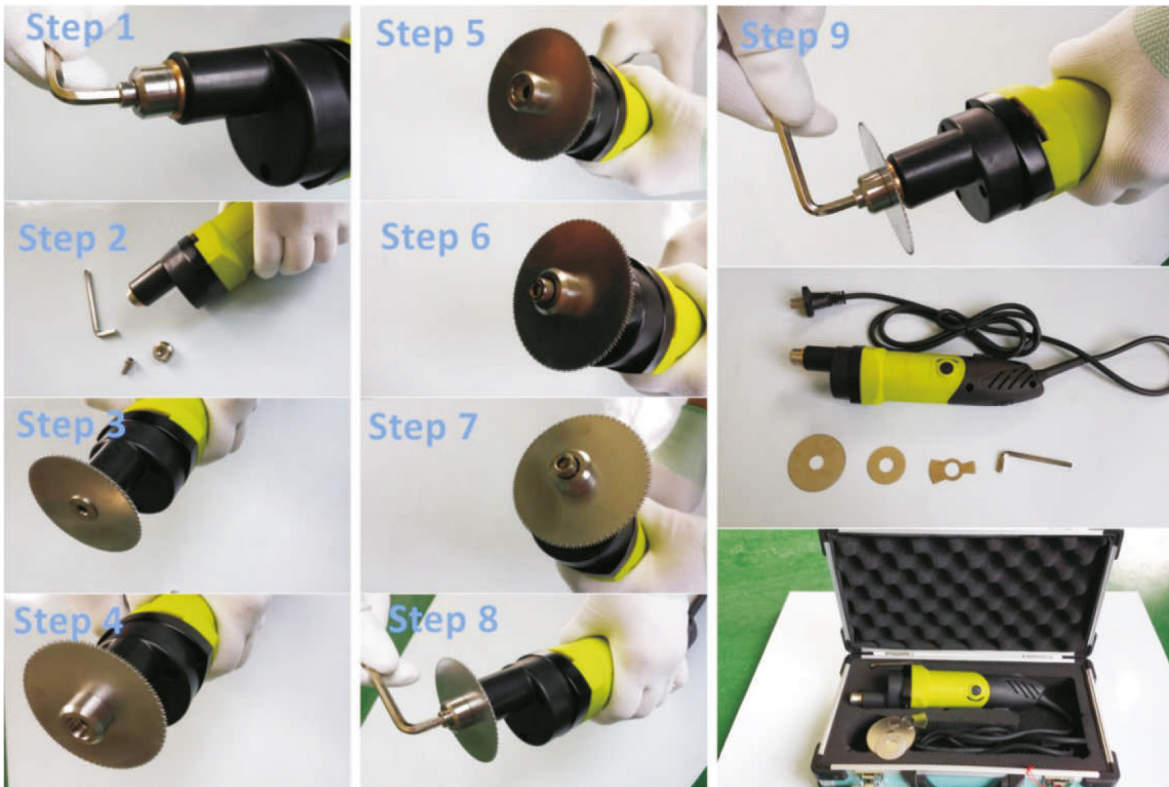
**Storage/Carry Case**

## Technical Specifications >>

Saw handpiece	Output voltage	80W
	Unit rise of temperature	≤25°C
	Output Power	AC220V/50Hz or 110V/60HZ
Non-loading speed	0-13000cpm	
Non-loading noise	≤65dB ( A )	
Classification	Short-time duty	



## Operating Instructions >>



- 1. Remove the main unit, allen key and saw blades from the case,***
- 2. Use the allen key to unscrew the blade holder,***
- 3. Once the blade holder is loose remove it from the unit,***
- 4. Place your chosen blade on the drive shaft,***
- 5. Tighten the blade holder back onto the unit,***
- 6. Secure the blade into place using the allen key,***
- 7. The saw is now assembled ready for use. When finished, simply repeat these steps in reverse order.***

## ***Safety Instructions >>***

---

- 1. Before use check the saw for any mechanical damage. Ensure that the saw blade is not blunt, has no broken teeth and is correctly installed,***
- 2. Ensure the air vent of the motor is kept clean and clear from dust to prevent overheating which may cause damage to the motor,***
- 3. During the use do not overexert or apply pressure when the saw blade is moving. If the blade should become lodged in the plaster, switch the unit off and remove slowly,***
- 4. During the use motor will heat up, if the outer shell becomes excessively warm turn the motor off to avoid overheating and allow the motor to cool,***
- 5. Please switch the motor off if any abnormal noise or excess vibration occurs during use,***
- 6. Do not switch the power on and off frequently as this will cause damage to the motor,***
- 7. Clean the saw after use and store in a dry place to avoid corrosion.***

## ***Maintenance, Care and Warranty >>***

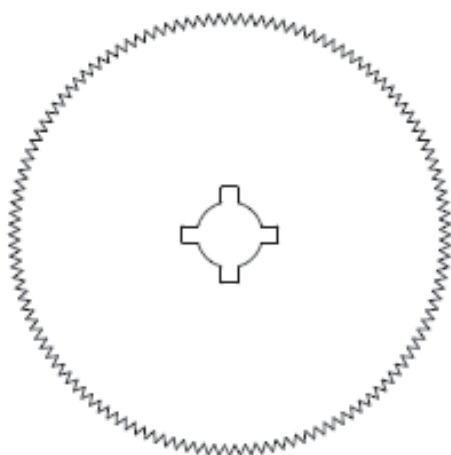
---

***Inspect all parts at regular intervals and replace the saw blades as needed.***

***If the motor is functioning correctly but there are problems with other working parts then remove the three screws at the head of the unit and remove the outer shell to clean/apply lubricating oil.***

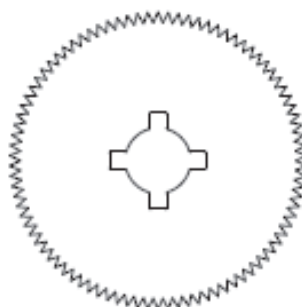
***Warranty: 1 Year***





Product Code  
AY64

SIZE  
64 mm



Product Code  
AY43

SIZE  
43 mm



Product Code  
AY52

SIZE  
52 mm

## >> **Important note**

*This documentation is intended to use exclusively for physicans and is not intended for laypersons. Information on the products and procedures contained in this document is of a general nature and does not represent and does not constitute medical advice or recommendations. Because this information does not purpose to constitute any diagnostic or therapeutic statement with regard to any individual medical case, each patient must be examined and advised individually and this document does not replace the need for such examination and/or advice in whole or in part.*

*The information and illustrations included in this catalogue are correct and true to the best of our knowledge. However, we cannot be regarded as binding warranty for quality. The user is responsible for checking the products prior to use whether they are suited for the intended purpose.*





#### ISTANBUL

**Address** : Molla Gürani Mah. Molla Gürani Cad. No:59/9  
34093 Fındıkzade/Fatih/ISTANBUL/TURKEY  
**Tel/Fax** : +90 212 531 12 00 / +90 212 534 00 93  
**Website** : [www.aysam.com.tr](http://www.aysam.com.tr)

#### SAMSUN

**Address** : Organize Sanayi Sitesi Sabanoglu Mahallesi Vali M. Erdogan  
Cebeci Blv. No:34 Kutlukent, 55330 Tekkekoy SAMSUN/TURKEY  
**Tel/Fax** : +90 362 435 37 72 / +90 362 420 02 94  
**Website** : [www.aysam.com.tr](http://www.aysam.com.tr)  
**Mail** : [export@aysam.com.tr](mailto:export@aysam.com.tr)

#### WAREHOUSE

**Address** : Kirazlik Mah 1034 Cd. No:14 55330 Tekkekoy SAMSUN/TURKEY  
**Tel/Fax** : +90 362 435 37 72  
**Website** : [www.aysam.com.tr](http://www.aysam.com.tr)  
**Mail** : [depo@aysam.com.tr](mailto:depo@aysam.com.tr)

